

TECHNICAL DATA SHEET ATOM XTREME TIE BACK

TDS183



ATOM-XTREME TB Technical Data Sheet

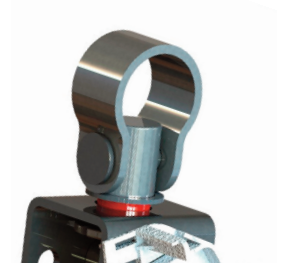
Checkmate ATOM-XTREME TIE BACK lightweight fall arrest block

Using the same revolutionary engineering you will find in the ATOM-XTREME range combined with versatile tie back capabilities, the ATOM XTREME TIE BACK is the ideal lightweight fall arrest block for use on a range of anchorages.



Tie Back Anchorage

The 900mm tie back area allows for connection to a suitable anchorage of up to a 900mm circumference.



Fall Arrest Indicating Swivel

The deployment indicator on the swivel identifies if the block has been subjected to a shock load.



Red Wear Indicator

The red indicator chord notifies the user that the webbing has sustained damage and the device must be removed from service.



Triple Micro Pawls

The three pawls operate independently for faster lock on. Internal slipping brake negates the need for an external energy pouch.



TIE-BACK Steel Snap Hook

5000lbs gate rated steel snap hook supplied as standard with Tie-Back models.



Dual Yoke Assembly

The ATOM-XTREME Dual provides for continuous connection when transferring between anchorages. Both devices work independently and also freely rotate and swivel for correct alignment.

TDS183 ISSUE 05

ordering information

Part No.	Description	Weight
ATOM-X-107	1.8m ATOM-XTREME tie back c/w TB hook	1.1 kg [2.2lbs]

Internal Energy Absorber

Innovative micro-braking system design.

Aluminium Connector Ring

Lightweight Aluminium ring connects the external tail to the lifeline and also signifies the limit of the allowable tie back area

TIE-BACK Steel Snap Hook

High strength Steel TIE-BACK hook with a 5000lb gate load rating

Fall Indicating Swivel

360 degree rotation and 180 degree pivot ensures the block remains in the correct orientation in any working condition.

The 20mm eye will enable connectivity to a range of karabiners and scaffold hooks.

External Tail

Allows for easy reach when attached to the rear D.

ATOM-XTREME TIE-BACK 900mm

110mm/4.3"
900mm/35.4"



product features

- Webbing made with Dyneema®
20mm-minimum breaking load 15kN
- Wear Indicating Chord
Wear indicating chords integrated into Tie-Back area
- Average Arresting Force
below 4.0kN
- Maximum Arresting Force
6.0kN
- User Weight
150Kg Maximum
- Capacity
2 metres
- Tie-Back Hook
23kN ANSI Z359.12(09) 5000lbs gate rated hook

principal materials

- External Housings
PC ABS. High strength and rigidity. UV stabilised
- Shaft
Steel zinc plated & passivated
- Chassis
Hot rolled steel zinc plated & passivated
- Pawl
Steel, hardened - zinc plated & passivated
- Bearing Plates
PTFE
- Tie-Back Hook
Alloy steel

standards

- EN 360
- OSHA 1910.66 & 1926.502

Dyneema® and Dyneema®, the world's strongest fiber™ are trademarks of DSM. Use of these trademarks is prohibited unless strictly authorized



CHECKUSOUT

www.checkmateuk.com

